



# THE MATH-SCIENCE CONNECTOR

## Inside this Issue

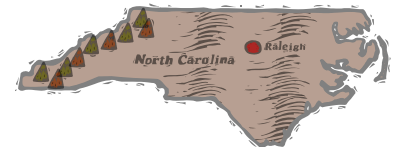
|  |        |
|--|--------|
| 2008 Annual Convention<br>Registration Information                         | 2      |
| SSMA Journal Call<br>Call for BOD Members<br>SSMA Address<br>Brain Teasers | 3      |
| Call for Award<br>Nominations  | 4-5    |
| SSMA Committee<br>Invitation   | 5      |
| Membership Form  | 6      |
| Other Conferences &<br>Workshops   | 7-9    |
| Publications and Websites<br>Membership Committee                          | 9-10   |
| Answers to Brain Teasers   | 10     |
| Employment Opportunities   | 3 & 11 |
| SSMA Contact Information   | 12     |
| Information on Raleigh   | 13     |

## Join us for the 2008 Annual Convention

**John Park** and his team are making plans for the **2008 SSMA Annual Convention**.

This year's convention will be held at the Sheraton Imperial Hotel in the Raleigh-Durham, NC area on **November 13-15, 2008**. Mark your calendars now and plan

to attend. Sessions will include research, projects, and instructional ideas in the areas of science, mathematics, and the integration of these content areas. Educators at all levels are invited to attend. It is a great convention for doctoral students who have interests in science and mathematics education.



Registration for the convention and hotel can be done online. Please check the SSMA website for more information. The registration rates and hotel information are also provided on page 2 of this newsletter.

<http://www.ssma.org/>



## Sample Photos from Previous SSMA Conventions

See what you might miss if you don't attend!





## SCHOOL SCIENCE AND MATHEMATICS ASSOCIATION

2008 CONVENTION (November 13-15, 2008)

**Sheraton Imperial Hotel – Raleigh-Durham, North Carolina**

| Registration Categories →   | Full <sup>a</sup> | Thursday Only <sup>b</sup> | Friday Only <sup>c</sup> | Saturday Only <sup>d</sup> |
|---|-------------------|----------------------------|--------------------------|----------------------------|
| <b>Full-Time Student</b><br>(Registration includes a 3-month Mini-Membership in SSMA) | \$170.00          | \$ 65.00                   | \$ 65.00                 | \$ 60.00                   |
| <b>K-12 Teacher</b><br>(Registration includes a 3-month Mini-Membership in SSMA)      | \$190.00          | \$ 80.00                   | \$ 80.00                 | \$ 75.00                   |
| <b>SSMA Member</b><br>(ADD \$50 to renew membership)                                  | \$210.00          | \$100.00                   | \$100.00                 | \$95.00                    |
| (After October 15, 2008)  | \$240.00          | \$110.00                   | \$110.00                 | \$105.00                   |
| <b>Non-Member</b><br>(After October 15, 2008)   | \$260.00          | \$150.00                   | \$150.00                 | \$145.00                   |
| <b>(Non-Member registration includes one year SSMA Membership)</b>                    | \$290.00          | \$160.00                   | \$160.00                 | \$155.00                   |

<sup>a</sup>**Full registration** includes: Thursday coffee break and evening reception with cash bar; Friday breakfast, coffee breaks, and luncheon; Saturday morning breakfast and lunch; admission to all Convention sessions, and a copy of the 2008 SSMA Convention Program.

<sup>b</sup>**Thursday Only registration** includes: Thursday coffee break, evening reception with cash bar, admission to Thursday Convention sessions, and a copy of the 2008 SSMA Convention Program.

<sup>c</sup>**Friday Only registration** includes: Friday morning breakfast, coffee breaks, and luncheon; admission to Friday Convention sessions, and a copy of the 2008 SSMA Convention Program.

<sup>d</sup>**Saturday Only registration** includes: Saturday morning breakfast and lunch, admission to Saturday Convention sessions, and a copy of the 2008 SSMA Convention Program.

**\*\*Advance Registration Deadline: (October 15, 2008)**

**Please register online at <http://www.ssma.org/>**

*(Your registration will be recorded when payment is received.)*

**Sheraton Imperial Hotel contact information:**  
Address: 4700 Emperor Blvd., Durham, NC 27703  
Phone: 919-941-5050  
Hotel Web Site: <http://www.sheratonrtp.com/>

**Make Room Reservations by October 22, 2008:**  
Phone: 1-800-325-3535  
Online: **Go to [www.ssma.org](http://www.ssma.org/) and select hotel link**  
[Ask for SSMA rate - \$97 single/double]

### SSMA Journal

All manuscript submissions and reviews for School Science and Mathematics are now online through the journal website at <http://ssmj.tamu.edu/>. Hard copy submissions are no longer used. Please visit the web site for guidelines and to submit manuscripts. See the October 2008 issue of the journal for information about calls for manuscripts, including a new section Research in the Classroom.

If you would like to be a Reviewer, please go the Journal website at <http://ssmj.tamu.edu/> and complete an application form. Reviewers prepare comments, reviews, and recommendations for 1-2 manuscripts a year in their area of specialization. Reviewers are needed in all areas of expertise, especially teacher preparation and professional development.

Quality manuscripts for the Journal are needed. Please see an issue of the Journal or visit the website for content areas and guidelines for submission. Members are especially encouraged to submit data-based research manuscripts on K-12 teaching or learning of science or mathematics, or their integration.

The SSM online submission and review site: <http://ssmj.tamu.edu/>.

### Nominations for SSMA Board of Directors

To nominate a candidate to serve on the SSMA Board of Directors, a petition of twenty-five (25) signatures can be sent to **Kees de Groot, Chair of the Nomination and Election Committee**. Self-nominations are accepted as well. Please contact:

**Cornelis (Kees) de Groot**  
University of Rhode Island  
School of Education  
709 Chafee  
Kingston, RI 02881  
[degrootc@mail.uri.edu](mailto:degrootc@mail.uri.edu)

### Address for SSMA

As of August 1, 2007, all membership and subscription business with SSMA will be handled through the SSMA office located at Oklahoma State University (OSU) in Stillwater, Oklahoma. Please make note of the following contact information for your records:

**School Science and Mathematics Association**  
**Oklahoma State University**  
**College of Education**  
**245 Willard**  
**Stillwater, OK 74078**  
**Fax: (405) 744-6290**  
**Telephone: (405) 744-8018**  
**Email: [office@ssma.org](mailto:office@ssma.org)**

### Brain Teasers

- 1) What number, when written out in word form, has all the letters in alphabetical order?
- 2) Which planet in our solar system is not named after a Greek or Roman god?
- 3) What is the number that is known as a *googol*?
- 4) Approximately, how many planet **Earths** would fit inside the planet **Jupiter**?
- 5) What “creature’s” jump has an acceleration rate that is 20 times a space shuttle launch?
- 6) Which tree’s bark is fireproof?

Answers to these questions can be found on page 10 of this newsletter or online @ the *Sciensational* website (<http://www.sciensational.com/>).

### EMPLOYMENT OPPORTUNITY

The Town School in NYC is an independent elementary school on the Upper East Side. We are looking for a math coordinator for kindergarten through third grade. We are looking for someone with experience who can mentor teachers in math and teach cooperatively with them in the classroom. This person should also be skilled in evaluating children of those ages. Please contact **Joan Sokotch; Head of the Lower School; The Town School; 540 East 76 Street; New York, New York 10021; (917) 432-3021; [jsokotch@townschool.org](mailto:jsokotch@townschool.org)** for additional information.

## Call for 2009 Awards

The SSMA Awards Committee invites the membership to submit nominees to be considered for the **GEORGE G. MALLINSON DISTINGUISHED SERVICE AWARD** and **AWARD FOR EXCELLENCE IN INTEGRATING SCIENCE AND MATHEMATICS** to be awarded at the 2009 Annual Convention. The criteria for each award are listed below. Previous winners of the awards can be found at the SSMA website (<http://www.ssma.org>).

### GEORGE G. MALLINSON DISTINGUISHED SERVICE AWARD

The guidelines for the Distinguished Service Award, which may be given annually by SSMA, are as follows:

- Nominee should have been a member of SSMA for at least 10 years.
- Nominee should have shown substantial participation and leadership in SSMA activities such as paper presentations at meetings, committee work, membership work, reviewer for journal, etc.
- Nominee should have exhibited scholarship, leadership, and/or teaching excellence in mathematics/science education.

Any member of SSMA is free to nominate a person(s) satisfying the criteria noted above. An application may remain active for three years. Winner receives a complimentary conference registration.

Submission Requirements (PDF preferred; Word file also accepted)

- **Vita**
- **Summary (double-spaced; 12 font) addressing:**
  - **How nominee has shown substantial participation and leadership in SSMA activities**
  - **How nominee has exhibited scholarship, leadership, and/or teaching excellence in mathematics/science education**

Materials (for each award) are to be sent electronically to **Alfinio Flores** ([alfinio@udel.edu](mailto:alfinio@udel.edu)) prior to **March 5, 2009**.



### AWARD FOR EXCELLENCE IN INTEGRATING SCIENCE AND MATHEMATICS

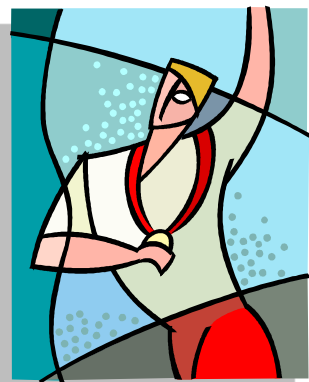
The guidelines for the Award for Excellence in Integrating Science and Mathematics are as follows:

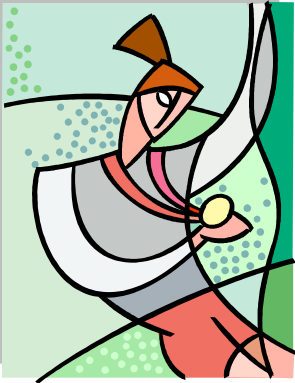
- Nominee should be a person or group who/which has fostered, promoted, and extended the integration of mathematics/science at the elementary, secondary, or university level.
- Nominee should be active in science/mathematics education and in the development of curricula for the preparation of teachers, educational research, or other activities of significant educational value.
- Nominee should have shown an impact on science/mathematics education.

Any member of SSMA is free to nominate a person(s) satisfying the criteria noted above. The nominee need not be a member of SSMA. Winner receives a complimentary conference registration.

Submission Requirements (PDF preferred; Word file also accepted)

- **Vita**
- **Summary (double-spaced; 12 font) addressing:**
  - **How person or group has fostered, promoted, and extended the integration of mathematics/science at the elementary, secondary, or university level**
  - **How person or group has impacted science/mathematics education**





### OUTSTANDING EARLY CAREER SCHOLAR AWARD

The Early Career Scholar Award acknowledges contributions to science and/or mathematics education during the five years immediately following receipt of the doctoral degree. To qualify for the award the nominee must have received the doctoral degree on or after May 1, 2003.

The Early Career Scholar Award winner will be invited to speak (registration included) at the Annual Convention and receive \$500 towards conference travel expenses.

Any member of SSMA is free to nominate a person(s) satisfying the criteria noted above. The nominee must be a member in good standing for 1 year prior to submitting application & a member in good-standing to receive the award.

#### Submission Requirements

- **Vita**

**Submit three exemplary refereed scholarly works. Scholarly works must be published or in press.**

(Materials need to relate to themes common to mathematics and science education; Integration; Technology; Constructivism/Inquiry; Professional development; Other)

#### **Two-page (double-spaced; 12 font) summary addressing:**

- Research interests
- How submitted scholarly works have impacted research area (Note percent of contribution and nature of contribution to submitted co-authored scholarly works)

#### **Two support letters emailed separately addressing:**

- Scholar's contribution of work to the field
- Quality of nominee's scholarship

(One support letter must be from non-dissertation committee member)

Materials (for each award) are to be sent electronically to:  
**Alfinio Flores**  
([alfinio@udel.edu](mailto:alfinio@udel.edu))  
prior to **March 5, 2009**

### *SSMA Committee Invitation*

Please feel free to attend any of our SSMA committee (Awards and Endowment Committee, Conventions Committee, Finance Committee, Membership Committee, Nomination & Election Committee, Policy Committee, Publications Committee) meetings during the 2008 convention. If you have a specific concern or a brilliant idea, please contact the committee chair (listed on page 12) directly!

### Make Plans to Attend the SSMA 2008 Convention

**Thursday-Saturday  
November 13-15, 2008**

Raleigh-Durham, NC

#### **Sheraton Imperial Hotel & Convention Center**

4700 Emperor Blvd  
Durham, NC 27703  
(919) 941-5050

#### *For more information:*

John Park  
North Carolina State University  
Department of Mathematics,  
Science, & Technology  
Education  
Campus Box 7801  
Raleigh, NC 27695





School Science and Mathematics Association

Application for Membership (2008-2009)

The Application for Membership can also be completed online http://www.ssma.org/

School Science and Mathematics Association (SSMA) Membership

Name: \_\_\_\_\_ E-Mail: \_\_\_\_\_ Date: \_\_\_\_\_

Affiliation—School/Department: \_\_\_\_\_

Affiliation Street Address: \_\_\_\_\_

City: \_\_\_\_\_ State: \_\_\_\_\_ Zip Code: \_\_\_\_\_ Country: \_\_\_\_\_

Affiliation Telephone #: \_\_\_\_\_ Fax #: \_\_\_\_\_

Home Street Address: \_\_\_\_\_

City: \_\_\_\_\_ State: \_\_\_\_\_ Zip: \_\_\_\_\_ Home Telephone #: \_\_\_\_\_

Preferred Mailing Address: [ ] Affiliation OR [ ] Home

Area(s) of Expertise: (Please check all that apply.)

- [ ] Assessment [ ] Curriculum [ ] Informal Education [ ] Integration [ ] International [ ] Inquiry [ ] Learning [ ] Mathematics [ ] Research [ ] Science [ ] Teacher Education [ ] Teaching [ ] Technology [ ] Technology Education [ ] Other \_\_\_\_\_

Grade Level(s): (Please check all that apply to your students or to your pre-service/in-service teachers.)

- [ ] Pre-K [ ] K [ ] 1 [ ] 2 [ ] 3 [ ] 4 [ ] 5 [ ] 6 [ ] 7 [ ] 8 [ ] 9 [ ] 10 [ ] 11 [ ] 12 [ ] Post-Secondary [ ] Pre-Service [ ] In-Service

MEMBERSHIP RATES: (Please check one.)

- [ ] Active ..... \$50.00/year [ ] Active International ..... \$60.00/year [ ] Student ..... \$25.00/year [ ] Student International ..... \$30.00/year [ ] Emeritus.....\$25.00/year [ ] Life ..... \$625.00, one-time payment

(Please check one.) [ ] Membership Renewal [ ] New Member

X: \_\_\_\_\_

Signature of Faculty Instructor or Advisor (Students Only)

Mail to:

Check, money order, or cash in US\$ payable to SSMA

School Science and Mathematics Association College of Education Oklahoma State University 245 Willard Stillwater, OK 74078



Conferences &  
Workshops

➤ **Joint Meeting of PME 32 and PME-NA XXX: History, Education and Cognition** @ Morelia, Michoacán, México **July 17-21, 2008**. Hosted by the Center for Research and Advanced Studies – IPN and Michoacán University of Saint Nicholas of Hidalgo. See the website at <http://www.pme32-na30.org.mx/annou.htm> for additional information.

- The PME-NA business meeting is scheduled for **Saturday, July 19, 1:50 PM**, at Room 6, in Colegio de San Nicolás de Hidalgo (the main conference building). There is an opening in the Steering Committee for an officer from Canada. If you are interested in the position, please contact **Jose Luis Cortina** ([jose.luis.cortina@mac.com](mailto:jose.luis.cortina@mac.com)). Nominations can also be made from the floor.
- **The Algebra Project Conference** (<http://www.algebra.org/>) @ Jackson State University in Jackson, MS **Thursday, July 24th – Sunday, July 29th, 2008**. For more information send an email to [program@algebra.org](mailto:program@algebra.org). NOTE: Deadlines for proposals have already past.
- The **2008 Western Pacific Geophysics Meeting** is scheduled for **July 29 – August 1, 2008** in Cairns, Australia. Additional information on the conference can be found online at <http://www.agu.org/meetings/wp08/>.
- **Coaching: A Matter of Influence – An Institute for Mathematics Coaches**, grades K-12 -- **July 29-August 1, 2008** @ Education Development Center, Inc. (EDC), in Newton, Massachusetts. The institute fee is \$950 per person. This fee includes a continental breakfast and lunch for the four days. Information can be found online at <http://cllc.edc.org/instructionalcoach08/index.html>.
- **NCSM PRIME Leadership Academy – July 29-August 1, 2008 @ Baltimore Marriott Hunt Valley Inn in Hunt Valley, Maryland**. This academy is for K-16 mathematics education leaders (teams and individuals) who want to become PRIME Leaders who strengthen their school communities to eradicate achievement gaps among students and provide outstanding mathematics learning for all. Please register online at <http://ncsmonline.org/LeadershipAcademy/academy.html> by **July 15, 2008**.
- **Think Math!** and **CME Projects** are offering professional development workshops **August 4-8, 2008** in Boston, MA. Think Math! workshops are designed for K-5 elementary teachers, specialists, coaches, and administrators. CME Project workshops are designed around the high school mathematics curriculum. Graduate credit is available. Information can be found online for these workshops at <http://www.edc.org/thinkmath> (Think Math!) and <http://www.edc.org/cmeproject> (CME Project). Please contact Melody Hachey at EDC's Center for Mathematics Education: [mhachey@edc.org](mailto:mhachey@edc.org) or **(617) 618-2801** for additional information.
- **Fostering Geometric Thinking Toolkit (FGTT) Facilitator Institute -- August 11-15, 2008** @ the Heinemann Education Development Center in Newton, MA. See description at <http://cllc.edc.org/fgtinstitute08/index.html>. All participants will be given a set of the FGTT materials. Tuition will be waived for the first 25 participants who enroll. All participants will be responsible for the costs of their own travel, hotel, and evening meals.
- The bi-annual conference on **Children's' Mathematical Education (CME'08)** is scheduled for **August 17-22, 2008** in Iwonicz Zdrój, Poland. For additional information on the conference, see their website at <http://www.cme.rzeszow.pl/index.php?p=1ann>.
- **Science Education at the Crossroads' 2008 Conference** is scheduled for **October 2-4, 2008** at the Alta Lodge in Alta, UT. The deadline for speaker proposals has passed. Additional information on the conference can be found at their website: <http://www.sciedxroads.org/conference.html>.
- **National Council of Teachers of Mathematics (NCTM) Regional Conferences** are scheduled for **October 2-3, 2008** @ Oklahoma City, OK, **October 16-17, 2008** @ Cleveland, OH, and **November 6-7, 2008** @ Reno, NV. NCTM's Annual Meeting and Exposition is scheduled for **April 22-25, 2009** @ Washington, DC. Please check the website at <http://www.nctm.org/conferences/> for additional information.
- The **National Association of Biology Teachers (NABT) 2008 Professional Development Conference** is scheduled for **October 15-18, 2008** at the Cook Convention Center in Memphis, TN. Registration is now

open on the website at <http://www.nabt.org/sites/S6/index.php?p=568>. The deadline for advance registration is **September 15, 2008**.

- **National Association for Gifted Children [NAGC] -- 55th Annual Convention.** The **Math & Science** strand seeks to promote a greater understanding of the need for academic challenge and support within the disciplines of mathematics and science, as well as innovative strategies and research related to either field. Sessions in this strand will address teaching strategies that promote critical thinking in math and science classrooms, successful programs and curriculum, international comparisons of math and science achievement and programming, developing exceptional math and science talent, teacher training, and encouraging young scholars in the STEM fields. We invite you to join the authoritative voices and information pioneers in the field of gifted as they gather under one roof this year in Tampa, **October 29 - November 2, 2008**.
- **E-Learn 2008** (<http://www.aace.org/conf/eLearn/default.htm>). The World Conference on E-Learning in Corporate, Government, Healthcare, & Higher Education will be held **November 17-21, 2008** in Las Vegas, Nevada @ the Riviera Hotel & Convention Center. The conference is organized by the Association for the Advancement of Computing in Education (AACE) (<http://www.aace.org>) and co-sponsored by the International Journal on E-Learning (<http://www.aace.org/pubs/ijel>)
- **The Fourth International Joint Conference on Computer, Information, and Systems Sciences, and Engineering (CISSE 2008)** will be held **December 5-13, 2008**. This virtual conference is technically co-Sponsored by the Institute of Electrical & Electronics Engineers (IEEE) and the University of Bridgeport. **Paper submission deadline is October 15th, 2008**. For additional information, see the website at <http://www.cisse2008online.org>.
- **2008 Asian Technology Conference in Mathematics** (<http://atcm.mathandtech.org>) in **Bangkok, Thailand December 15-19, 2008**. The goal of this conference is to provide a forum for educators, researchers, teachers, and experts in exchanging information regarding enhancing technology to enrich mathematics learning, teaching, and research at all levels. English is the official language of the conference.
- **7th Annual Hawaii International Conference on Education** will be held **January 4 - 7, 2009** @ the Hilton Hawaiian Village Beach Resort & Spa in Honolulu Hawaii, USA. Paper submission deadline is **August 15, 2008**. This conference is sponsored by Pepperdine University - Graduate School of Education and Psychology, University of Louisville - Center for Sustainable Urban Neighborhoods, New Horizons in Education - The Journal of Education, Hong Kong Teachers' Association, and the California State University, East Bay - Educational Leadership Program. Additional information can be found online at <http://www.hiceducation.org> or via email [education@hiceducation.org](mailto:education@hiceducation.org).
- The third international **epiSTEME Conference** is scheduled for **January 5-9, 2009**. This conference is to review research on Science, TEchnology and Mathematics Education and is organized by the Homi Bhabha Centre for Science Education (TIFR), Mumbai, India, a National Centre of the Tata Institute of Fundamental Research, Mumbai, India. See the conference website online at <http://www.hbcse.tifr.res.in/episteme>.
- The **Association for Science Teacher Education (ASTE) 2009 International Conference** is scheduled for **January 8-10, 2009** at the Marriott Hartford Downtown in Hartford, Connecticut. Additional information is available online at <http://theaste.org/meetings/2009conference/index.htm>.
- The **Association of Mathematics Teacher Educators (AMTE) Thirteenth Annual Conference** is scheduled for **February 5 - 7, 2009** at the Orlando Airport Marriott Hotel in Orlando, Florida. Additional information is available online at [http://www.amte.net/conf\\_index\\_2009.shtml](http://www.amte.net/conf_index_2009.shtml).
- **American Association for the Advancement of Science (AAAS) Annual Meeting** is scheduled for **February 12-16, 2009** in Chicago, IL. For information on the conference and/or to submit workshop proposals, visit their website at <http://www.aaas.org/meetings/>.
- **Society for Information Technology and Teacher Education International Conference (SITE 2009)** is scheduled for **March 2-6, 2009** @ the Embassy Suites Hotel/Convention Center in Charleston, South Carolina. This conference is organized by the Society for Information Technology and Teacher Education

(SITE) (<http://site.aace.org/>) and the Association for the Advancement of Computing in Education (AACE) (<http://www.aace.org/>). Paper submissions are due on **October 17, 2008**. Additional information can be found online at <http://site.aace.org/conf/>.

- The **Research Council on Mathematics Learning (RCML)** seeks to stimulate, generate, coordinate, and disseminate research efforts designed to understand and/or influence factors that affect mathematics learning. RCML's 36th Annual Conference will be at Berry College in Rome, Georgia, **March 5-7, 2009**. RCML Speaker Proposal Form can be found at <http://www.unlv.edu/RCML>. **Proposals are due October 3, 2008**.
- Information about the **2009 National Science Teachers Association (NSTA) National Conference** can be found online at <http://www.nsta.org/conferences/2009new/>. The conference dates are **March 19-22, 2009** in New Orleans, LA. The deadline for speaker proposals has passed.
- The **2009 Annual International Conference for the National Association for Research in Science Teaching** is scheduled for **April 17-21, 2009** in Garden Grove, CA. The deadline for speaker proposals is **August 15, 2008**. For additional information and proposal guidelines, visit their website <http://www.narst.org/annualconference/2009conference.cfm>.
- The **2009 Informing Science + Information Technology Joint Conference (I<sup>2</sup>SITE)** is scheduled for **June 12-15, 2009** at Macon State College in Macon, GA. Information on the conference and submission of proposals can be found online at <http://informingscience.org/2009/index.htm>.
- The **Ninth International Conference on Technology in Mathematics Teaching (ICTMT 9)** will be in Metz, France **July 4-8, 2009**. Additional information about the conference, registration, and paper submissions can be found online at <http://www.ictmt9.org/>.
- The **13<sup>th</sup> Biennial European Association for Research on Learning and Instruction (EARLI) Conference** is scheduled for **August 25-29, 2009** in Amsterdam, The Netherlands. Additional information on the conference can be found online at <http://www.earli.org/>.
- The **European Science Education Research Association (ESERA) 2009 Conference** is scheduled for **August 31 – September 4, 2009** at the Grand Cevahir Hotel and Conference Centre in Istanbul, Turkey. For additional information on the conference visit their website at <http://www.esera2009.org/default.asp>.

- **National Geographic Videos** include glimpses of the video "**The Human Footprint**" which debuted on April 13, 2008. The topic provides images and statistics regarding what we consume in a year/lifetime. Visit the website at <http://channel.nationalgeographic.com/channel/videos/>.

*Publications  
& Websites*

- The **Final Report from the National Mathematics Advisory Panel – Foundations for Success** – online at <http://www.ed.gov/about/bdscomm/list/mathpanel/index.html>.
- **Mathematics Awareness Month** (<http://www.mathaware.org/mam/08/>) – In April, this site explored the results of the 2008 Presidential campaign using three different counting methods.
- **Who Wants To Be A Mathematician?** (<http://www.ams.org/wwtbam/>) – High school students compete for cash and prizes. This is supported by the American Mathematical Society.
- **Technology in Motion** (<http://www.sonycreativesoftware.com/news/techinmotion.asp>) – Schools can enter a student film contest. The contest deadline has passed for this year but the site offers information on the contest – so you can consider entering next year.
- **Research in Mathematics Education** (<http://www.informaworld.com/smpp/title~content=t779044232>) – This is the official journal of the British Society for Research into Learning Mathematics. Two issues each year published electronically by Routledge. Archival copies are available now from Volume 2 up to the present edition. For more information contact [Richard.frith@tandf.co.uk](mailto:Richard.frith@tandf.co.uk).
- **Google for Educators** (<http://www.google.com/educators/index.html>) – Online resources for teachers to use Google tools in their classrooms. **Do you have ideas for using Google tools in your classroom?** Please share them with us – or better yet, share them with Google to post online.

- **Teachers Development Group** (<http://www.teachersdg.org/>) – a nonprofit organization dedicated to improving all students' mathematical understanding and achievement through meaningful, effective professional development.
- **National Aeronautics and Space Administration (NASA) Quest** (<http://quest.arc.nasa.gov/>) – free online tools, resources, lesson ideas, and web-based interactive explorations for teachers, students, and parents.
- **Exploratorium: the Museum of Science, Art and Human Perception** (<http://www.exploratorium.edu/>) – includes online experiments, resources, and artwork that provide interdisciplinary experiences.
- Questions about science? Visit the **Mad Science Network** (<http://www.madsci.org/>) for answers – if an answer to your question is not there, submit it to their scientists and check back later for an answer.
- The English translation of the **2008 Japanese Mathematics Curricula in the Course of Study (Grades 1-9)** is now available – the 33 page PDF document is available for \$8.00 from the Global Education Resources website at <http://www.globaledresources.com/products/other/2008-japanese-mathematics-curricula.html>.

*The Science Teacher*  
- Special Issue  
February 2009

**Proposed Title:** Interdisciplinary in Science and Science Teaching  
**Submission Deadline:** August 15, 2008

**Theme Issue Description:** Some of the greatest achievements in science have been the result of interdisciplinary collaboration; solutions to complex problems often require thinking outside rigid disciplinary borders. *The Science Teacher* is

planning a special issue featuring articles that illustrate the interdisciplinary nature of science itself or discuss connections between the sciences and other curriculum areas. Please consider contributing to this special issue with articles that reveal the complex nature of science or discuss specific teaching strategies that show how a single science discipline can be connected to the other sciences or with the humanities such as art, social studies, music, or language arts. **The Fine Print:** Manuscripts should describe successful lessons implemented in secondary classrooms, as well as provide specific details for educators who might wish to use the activities with their own students. The manuscripts should include appropriate assessment tools and specifically reference the National Science Education Standards where appropriate. Examples of student work to illustrate results of a successful lesson are encouraged, as are figures, sidebars, and accompanying photos. Author Guidelines can be found online at: <http://www.nsta.org/publications/journals.aspx#authors>.

### Membership Committee

After two years of work we finally have (1) A NEW Brochure and (2) An updated list of our members. Our new brochure will be used for recruitment and dissemination to the science and mathematics education community.

In early fall, our committee will begin a membership drive to contact our inactive members in an attempt to bring them back to SSMA. If you know any member who's membership has lapsed, we invite you to encourage them to return to SSMA. In addition please send their contact information to the **SSMA office** ([office@ssma.org](mailto:office@ssma.org)) so that we will also be able to contact them.

If you have doctoral students, faculty, or teachers who should be members of SSMA send that information to the committee chair, **Pamela Fraser-Abder** ([pamela.abder@nyu.edu](mailto:pamela.abder@nyu.edu)). We will invite them to become members of a truly outstanding Association.

Over the next five months our committee comprised of **David Pagni, Zhonghe Wu, Donna Farland, Cheng-yau Lin, Fengjeu Luo, Sarah Ramsey,** and **Pamela Fraser-Abder** will be making a concerted effort to bring back our members and to recruit new members. We invite each one of you to join us in this campaign.

### Answers to Brain Teasers found on page 3

- 1) Forty
- 2) Earth
- 3) 1 googol =  $10^{100}$
- 4) About 1000 Earths would fit inside Jupiter
- 5) Flea
- 6) Redwood

The information used for these Brain Teasers can be found @ the **Sciensational** website (<http://www.sciensational.com/>).



COLLEGE OF  
EDUCATION

## UNIVERSITY OF WYOMING

### Wyoming Excellence in Higher Education Endowed Chair in Mathematics Education

Employment  
Opportunity

The University of Wyoming is seeking an internationally recognized scholar in mathematics education to be a dynamic leader in the expansion of its mathematics education programs and to cultivate a nationally recognized graduate program in mathematics education. In addition to developing the graduate programs, responsibilities include research, collaboration with interdisciplinary teams in seeking extramural funding, teaching in areas of expertise, and service/outreach on a state and national level.

We are seeking candidates who have:

- an earned doctorate in mathematics education or in mathematics with extensive research and/or experience in mathematics education
- a record of teaching and research commensurate with the advanced associate or full professor rank
- a well-established and current record of research relevant to P-20 mathematics education and student learning
- a substantial and active record of extramural funding as a PI or Co-PI, which includes funding at the national level
- a record of excellence in teaching, on-campus and/or through outreach to constituencies beyond the university campus; K-12 teaching experience is preferred
- worked in and/or have experience in developing a graduate program
- knowledge of P-20 mathematics education and the ability to engage multiple constituents in a variety of education arenas (e.g., professional development, policy).

The endowed chair will work with the College of Education's mathematics education faculty and the intercollegiate, interdisciplinary Science and Mathematics Teaching Center, which has established ties to UW science and mathematics departments. In addition to a competitive salary commensurate with the status of a recognized national/international scholar this position includes funding to assist the chair's research and teaching endeavors.

The University of Wyoming is committed to its mission of nurturing an environment that values and manifests diversity, free expression, academic freedom, personal integrity, and mutual respect. The College of Education supports the University's mission with initiatives that include strong support for the Shepard Symposium for Social Justice, publication of the journal *Multicultural Perspectives*, a state-wide ESL endorsement grant, and recruiting and supporting an increasingly diverse faculty.

The University of Wyoming is a doctoral/research (extensive), Internet II, Division I-A, land-grant university with more than 13,000 students enrolled in baccalaureate, master's, and doctoral programs on and off campus. The only four-year, state university in Wyoming, UW is located in Laramie, a city of 27,000 nestled on the high plains between two ranges of the Rocky Mountains. The campus is a two-hour drive north of Denver, CO. Clean air, open spaces, abundant blue sky, a strong state budget with one of the lowest state tax structures in the nation, and proximity to numerous national parks, recreational areas, and forests are among the special fringe benefits. Additional information may be found on the UW web page at <https://uwsecureweb.uwyo.edu/ceid/MathEd.asp> and [www.laramie.org](http://www.laramie.org).

**Application:** Applications should include a statement of research and teaching interests and accomplishments, a curriculum vita, and the names and contact information for five references. Send an electronic copy of the application materials to Ms. Debra Dobbyn at [ddobbyn@uwyo.edu](mailto:ddobbyn@uwyo.edu). Non-electronic materials can be sent directly to Patricia McClurg, Dean, Dept. 3374, 1000 E. University Ave., Laramie, WY 82071. Applicant screening begins as applications are received.

## SSMA Contact Information

| Name / Position(s)  | Mailing Address   | Phone / Email   |
|---|---|---|
| <b>Arthur White</b><br>President, 2006-2008   | The Ohio State University<br>238 Arps Hall<br>1945 North High Street<br>Columbus, OH 43210-1172   | Phone: (614) 292-8061<br>Fax: (614) 292-7695<br>white.32@osu.edu                      |
| <b>Alan Zollman</b><br>President-Elect, 2007-2008<br>Finance Committee Chair                                | Northern Illinois University<br>Department of Mathematical<br>Sciences<br>Watson Hall 352<br>De Kalb, IL 60115-2888                       | Phone: (815) 753-6750<br>Fax: (815) 753-1112<br>zollman@math.niu.edu                  |
| <b>Julie Thomas &amp; Sandi Cooper</b><br>Executive Co-Directors, 2006-2011                                 | School Science and Mathematics<br>Association<br>College of Education<br>Oklahoma State University<br>245 Willard<br>Stillwater, OK 74078 | Phone: (405) 744-7396<br>Fax: (405) 744-8018<br>office@ssma.org                       |
| <b>Pamela Fraser-Abder</b><br>Director-at-Large, 2005-2008<br>Membership Committee Chair                    | New York University<br>Department of Teaching and<br>Learning<br>239 Greene Street<br>New York, NY 10003-6674                             | Phone: (212) 998-5208<br>Fax: (212) 995-4198<br>pamela.abder@nyu.edu                  |
| <b>Alfinio Flores</b><br>Director-at-Large, 2007-2010<br>Awards & Endowment Committee<br>Chair              | University of Delaware<br>Department of Mathematical<br>Sciences<br>504 John Ewing Hall<br>Newark, DE 19716                               | Phone: (302) 831-1864<br>Fax: (302) 831-4511<br>alfinio@udel.edu                      |
| <b>Cornelis (Kees) de Groot</b><br>Director-at-Large, 2006-2009<br>Nomination & Election Committee<br>Chair | University of Rhode Island<br>School of Education<br>709 Chafee<br>Kingston, RI 02881   | Phone: (401) 874-4149<br>Fax:<br>degrootc@mail.uri.edu                                |
| <b>Ken Miller</b><br>Director-at-Large, 2005-2008<br>Conventions Committee Chair                            | Montana State University-Billings<br>Department of Educational Theory<br>& Practice<br>CEHS 279<br>Billings, MT 59101-0298                | Phone: (406) 657-2034<br>Fax: (406) 657-2104<br>kmiller@msubillings.edu               |
| <b>Gil Naizer</b><br>Director-at-Large, 2006-2009<br>Publications Committee Chair                           | Texas A&M University-Commerce<br>Education South 226<br>Commerce, TX 75429  | Phone: (903) 886-5124<br>Fax : (903) 886-5581<br>gilbert_naizer@tamu-<br>commerce.edu |
| <b>John Park</b><br>Director-at-Large, 2007-2010<br>Policy Committee Chair                                  | North Carolina State University<br>Department of Mathematics,<br>Science, & Technology<br>Education<br>Raleigh, NC 27695                  | Phone: (919) 342-6417<br>Fax: (919) 515-6892<br>park@unity.ncsu.edu                   |
| <b>Gerald Kulm</b><br>Journal Editor, 2007-2012   | Texas A&M University<br>Department of Teaching, Learning,<br>& Culture<br>College Station, TX 77843-4232                                  | Phone : (979) 862-4407<br>Fax : (979) 845-9663<br>gkulm@coe.tamu.edu                  |
| <b>Valeria Amburgey</b><br>Newsletter Editor, 2006-2009   | 23 Observatory Pointe Drive<br>Wilder, KY 41076-2419  | Phone: (859) 781-4126<br>Fax: (859) 781-4636<br>vamburgey@insightbb.com               |

**The Math-Science Connector**  
 Valeria Amburgey, Editor  
 23 Observatory Pointe Drive  
 Wilder, KY 41076-2419

Phone: (859) 781-4126  
 Fax: (859) 781-4636  
 Email: [vamburgey@insightbb.com](mailto:vamburgey@insightbb.com)



The address above is for the newsletter only. Send all other correspondence including change of address to the Executive Co-Directors:

**Julie Thomas & Sandi Cooper**  
**School Science and**  
**Mathematics Association**  
**College of Education**  
**Oklahoma State University**  
 245 Willard  
 Stillwater, OK 74078  
 Phone: (405) 744-8018  
 Fax: (405) 744-6290  
 Email: [office@ssma.org](mailto:office@ssma.org)

<http://www.ssma.org>

**2008 SSMA Convention**  
**Raleigh-Durham, NC**  
**November 13-15, 2008**

**Sheraton Imperial Hotel & Convention Center**  
 4700 Emperor Blvd  
 Durham, NC 27703  
 (919) 941-5050

- Ⓢ Sheraton Imperial Hotel & Convention Center  
<http://www.sheratonrtp.com/>
- Ⓢ Raleigh's Official Tourism Site  
<http://www.raleighcvb.org/>
- Ⓢ City of Raleigh  
<http://www.raleigh-nc.org/>
- Ⓢ Downtown Raleigh Alliance  
<http://www.godowntownraleigh.com/>
- Ⓢ North Carolina State University  
<http://www.ncsu.edu/>
- Ⓢ Raleigh Chamber of Commerce  
<http://www.raleighchamber.org/>
- Ⓢ Raleigh Weather Conditions  
<http://www.wunderground.com/US/NC/Raleigh.html>
- Ⓢ North Carolina Office of Archives and History  
<http://www.ah.dcr.state.nc.us/>
- Ⓢ The Triangle City Guide  
<http://triangle.citysearch.com/>



Membership in the School Science and Mathematics Association is open to any person who supports the objectives of the Association, who has paid membership dues, and completed an application.

Benefits of SSMA Membership include:

- Membership in an association encompassing both science and mathematics teaching and learning.
- 8 issues of the official journal *School Science and Mathematics*.
- 3 issues of the SSMA newsletter *The Math-Science Connector*.
- Opportunities to submit presentation proposals for the Annual Convention.
- Voting privileges for Association business and election of officers.
- Opportunities to serve on an SSMA Committee or Leadership Team.

Additional information about SSMA is available at our website (<http://www.ssma.org>) or by contacting **Julie Thomas and Sandi Cooper** ([office@ssma.org](mailto:office@ssma.org)).

To contribute news items for inclusion in the SSMA newsletter (*The Math-Science Connector*), please contact **Valeria Amburgey** ([vamburgey@insightbb.com](mailto:vamburgey@insightbb.com)).